



Municipality of Mississippi Mills

PARKS AND RECREATION ADVISORY COMMITTEE AGENDA

Tuesday, May 25, 2021

3:45 p.m.

E-participation

	Pages
A. CALL TO ORDER	
B. DISCLOSURE OF PECUNIARY INTEREST AND GENERAL NATURE THEREOF	
C. APPROVAL OF AGENDA Recommended Motion: THAT the agenda be approved as presented.	
D. APPROVAL OF MINUTES Recommended Motion: THAT the minutes of the Parks and Recreation meeting on March 30, 2021 be approved.	3 - 7
E. DELEGATIONS AND PRESENTATIONS	
E.1. Don Maynard Park Delegation by Steve Maynard re: possible designs for Don Maynard Park	8 - 9
F. REPORTS	
F.1. Dog Park Work Group Minutes Dog Park Working Group minutes from the April 8 and April 22, 2021 meetings, forwarded for the information of the Parks and Recreation Committee.	10 - 12
F.2. Dog Park Working Group - Survey Submitted for review and comments.	13 - 17
G. BUSINESS ARISING OUT OF MINUTES	
H. ROUND TABLE	
I. INFORMATION AND CORRESPONDENCE	
J. OTHER / NEW BUSINESS	
K. MEETING ANNOUNCEMENTS	

L. ADJOURNMENT

Recommended Motion:

THAT the meeting be adjourned at x:xx p.m.



**The Corporation of the Municipality of Mississippi Mills
Parks and Recreation Advisory Committee Meeting**

MINUTES

March 30, 2021

3:45 p.m.

E-participation

Committee Present: Councillor Dalgity
Councillor Guerard
Scott Newton (4:08 pm)
Lyn Button
Sherryl Smith
Terry Ainsworth
Vicki Lowe
Victoria James-Lafleur

Committee Absent: Christine Andersen

Staff Present: Calvin Murphy, Recreation Manager
Dawn McDonald

A. CALL TO ORDER

The meeting was called to order at 3:45 pm

A.1 Motion to appoint an acting Chair for the March 30, 2021 meeting

Moved by Sherryl Smith

Seconded by Vicki Lowe

WHERE AS the Chair of the Parks and Recreation Advisory Committee, Scott Newton, was unable to attend the start of the meeting due to a last minute emergency;

THAT the Committee appoint Councillor Dalgity to Chair the meeting in Scott's absence.

CARRIED

B. DISCLOSURE OF PECUNIARY INTEREST AND GENERAL NATURE THEREOF

None

C. APPROVAL OF AGENDA

Moved by Councillor Guerard

Seconded by Vicki Lowe

That the agenda be approved as presented.

CARRIED

D. APPROVAL OF MINUTES

Moved by Sherryl Smith

Seconded by Vicki Lowe

That the minutes dated February 23, 2021 be approved as presented.

CARRIED

E. DELEGATIONS AND PRESENTATIONS

None

F. Reports

F.1 Almonte Community Centre - Upper Hall Kitchen Review

Committee members to provide input. Public Health regulations for rental of kitchen space to be taken into consideration as part of the design phase.

Action: Recreation Manager to arrange a site visit in April for members who are not familiar with the kitchen area at the Almonte Community Centre.

Moved by Sherryl Smith

Seconded by Lyn Button

That the Committee receive the report for information.

CARRIED

F.2 Recreation Program Review Working Group - March 9, 2021 Minutes

The Recreation Manager provided a recap of the Recreation Program Review meeting held on March 9, 2021.

F.3 Dog Park Working Group - March 19, 2021 Minutes

Councillor Dalgity, on behalf of the working group, thanked Vicki Lowe for her gracious offer to put together the survey questions. Next meeting of the working group is April 8, 2021. Survey questions will be brought to the Parks and Recreation Advisory Committee meeting on April 27, 2021.

Action: Recreation Manager to get an opinion on what types of fencing can be used on a community park and what is the Municipality's liability.

G. BUSINESS ARISING OUT OF MINUTES

None

H. ROUND TABLE

H.1 Spring Clean Up

A group of volunteers from the horticultural society in Pakenham cleaned up litter at the Bridge Park and put chicken wire around some of the trees to keep the beavers from destroying them.

Another group of volunteers have adopted a portion of Gemmill Park and have chipped in to clean up litter on two occasions so far this Spring

It was confirmed that "Pitch-in-Day" falls under the Community and Economic Development Committee. As with many other events, this too has been impacted by COVID-19 and it is still not clear if it will take place this year. However, people are encouraged to get out on their own to clean up streets and parks in their community.

H.2 Public Washrooms in Parks

The Municipality plans to open washrooms starting in May. Staff will consult with Public Health regarding necessary covid protocols. In 2020 cleaning of washrooms were done every two hours. It is anticipated that the same cleaning schedule will be required for the current year. A schedule will be developed that will provide time for cleaning of all public washrooms every two hours.

H.3 Mill Run Park

A report recommending the award of Contract 21-03 Mill Run Park Development will be on the agenda for the April 6, 2021 Council meeting. Work is to start this summer.

H.4 Summer Programs in Mississippi Mills

a. Soccer

The Almonte Soccer Club met last week. They hope to be able to have a regular season this year.

The Pakenham Recreational Soccer, which is run by volunteers through the Municipality, is still not certain how safe measures can be put in place to allow for screening and safety protocols but they too are hopeful that there will be kids soccer this year.

b. Baseball

The baseball diamonds in Mississippi Mills will open the end of May.

It is still uncertain if there will be a recreational "little league" this year.

Competitive baseball leagues are looking to move forward but it is still uncertain whether games will be permitted or if teams will be limited to practices only.

Recreational softball are reaching out to book ball parks for the 2021 season.

c. Basketball

There is no outdoor organized basketball offered through the Municipality.

Indoor basketball has been held in the school gymnasiums in the past but there is currently no access to school facilities.

I. INFORMATION AND CORRESPONDENCE

None

J. OTHER / NEW BUSINESS

None

K. MEETING ANNOUNCEMENTS

Next Meeting: Tuesday, April 27, 2021 at 3:45 pm

L. ADJOURNMENT

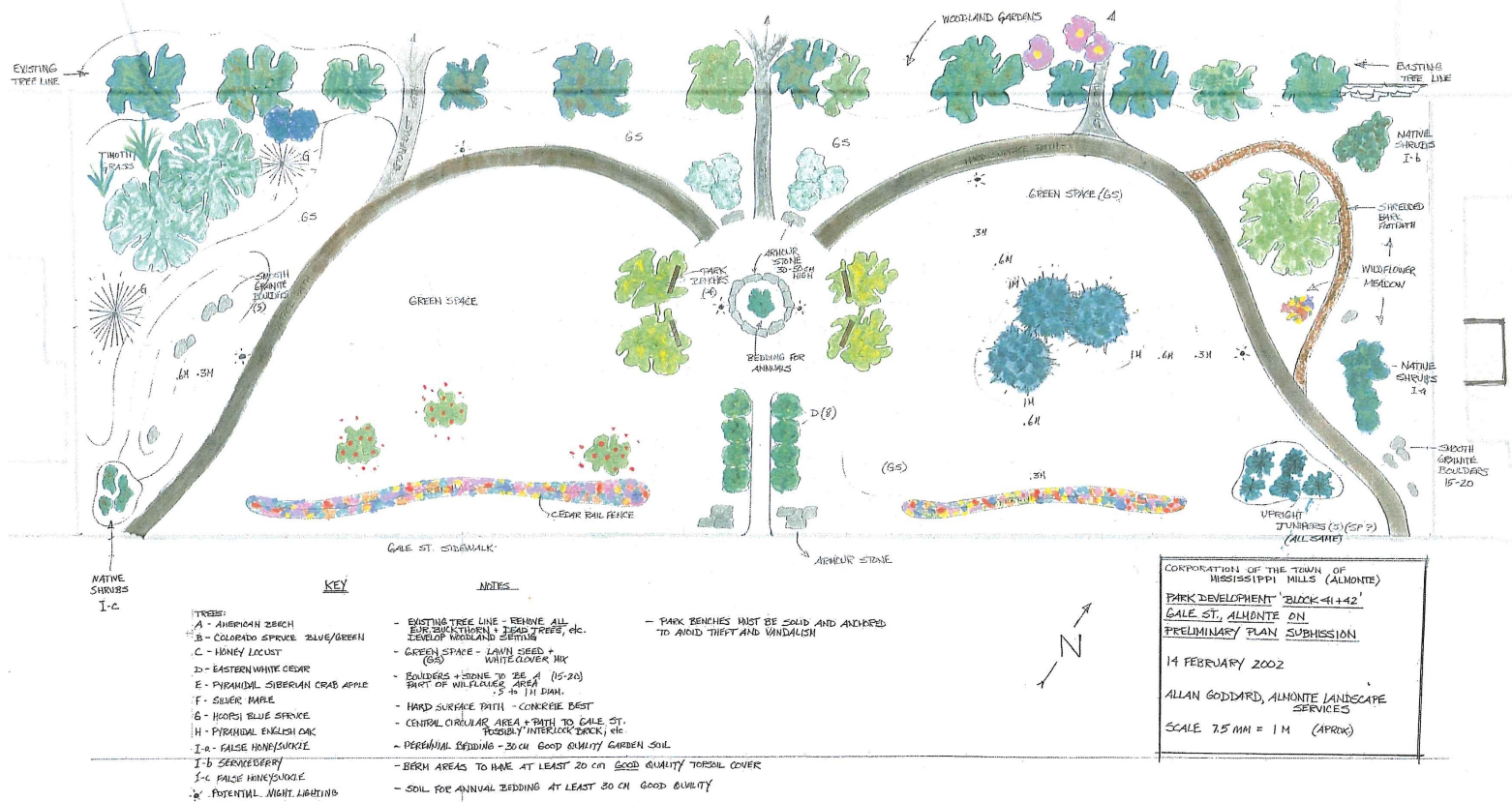
Moved by Vicki Lowe

Seconded by Victoria James-Lafleur

That the meeting be adjourned at 4:22 pm

CARRIED

Dawn McDonald, Recording
Secretary





Mississippi Mills – Dog Park Working Group

Thursday, April 8, 2021

Virtual Meeting conducted via Zoom

Start Time: 2:00 pm

Present: Councillor John Dalgity
Vicki Lowe
Laurel Cook
Sandra Franks
Calvin Murphy (Staff Representative)
Dawn McDonald (Recorder)

Absent: Terry Ainsworth

Vicki Lowe developed the attached draft survey which was sent to working group members prior to the meeting. As the survey is designed to take respondents to different questions depending on their responses, some members found it confusing and somewhat difficult to follow. John and Vicki agreed to try and develop an electronic survey for the next draft.

A fulsome discussion ensued with the following revisions being suggested:

- Include an identifier in the survey (ie. email address) to ensure that each person is only responding once.
- Include a question asking respondents to indicate which Ward they live in (Ramsay, Pakenham, Almonte)
- Laurel Cook provided her comments in written format (see attached). Suggestions discussed included:
 - Expand question “do you think Mississippi Mills would benefit from having an area where dogs could safely (*add exercise*) play off leash?
 - Delete question “What is most important to you in terms of safety if there was a dog park in the Town” (This will be covered in the previous question - benefits).
 - Expand question re: multi-use park to allow residents to respond about walkers and cyclists separately.
 - Revise question on “Park Size” to include catchment and change Neighbourhood park size to *approximately 1 acre*.
 - Reasons offered to residents for “which type of park they prefer” should be consistent, value added options. Laurel to give suggestions to Vicki for this question.
 - Insert a question prior to addressing funding options to introduce the concept of a dog park organization/group who would assume a level of responsibility for the park.
 - Expand “Funding” question into a 3 part question to ask respondents which type of funding they would choose for each type of park: neighbourhood, community and regional.
 - Replace “Town” with Municipality and “User Group” with Dog Park Group through out the survey for accuracy and consistency. Refer to attachment from Laurel Cook for other suggested word changes.

Costs and Liability were also discussed. As costing is somewhat fluid and exact costs are not available for all options it is difficult to incorporate this into the survey. Calvin Murphy contacted the Municipality's insurance provider for guidance on liability. The insurance agent could not provide a definitive answer. In general, owners are responsible for their own dogs; however, this could come back on the Municipality. The Municipality would need to maintain the park, filling holes, repairing fencing, etc. A minimum 6 foot fence was recommended and it was suggested that a fencing specialist should be consulted prior to commencing the build.

The goal is to have the survey on the agenda for the Parks and Recreation Advisory Committee for either the April or May meeting. The suggestions from the group will be incorporated into the survey and a revised version will be circulated. Another quick meeting of the Working Group can also be scheduled if required.

The meeting adjourned at 2:55 pm.

Mississippi Mills – Dog Park Working Group

Thursday, April 22, 2021

Virtual Meeting conducted via Zoom

Start Time: 2:00 pm

Present: Councillor John Dalgity
Vicki Lowe
Terry Ainsworth
Laurel Cook
Sandra Franks
Calvin Murphy (Staff Representative)
Dawn McDonald (Recorder)

Calvin Murphy lead the group through a question by question review of Version 2 of the Dog Park Survey.

The group agreed that the following changes should be incorporated into Version 3:

- Ask respondents to include their Name on the survey
- Use the IP address to limit the survey to only one response per household
- Limit the survey to Mississippi Mills residents only
- Remove Question C.2 – What time of day would you typically use a dog park?
- Change Question C.4 to ask residents to rank the top 5 amenities that they would like to see included in a dog park
- Change part two, Question D.1 so that everyone can express their concerns regarding a dog park, not just those who don't see a benefit in having one.

Calvin to report back to the Group on whether it is a liability concern for the Municipality if the off leash dog park incorporates multi use trails that are shared with walkers/hikers and cyclists. Depending on liability, Question E.2 may need to be removed from the survey as well.

The option of funding the dog park through proceeds derived from increased dog licensing fees was briefly discussed as well as the benefit of having on line access to purchase dog licenses and the policing of dog park users.

Councillor Dalgity agreed to put together an electronic version of the Dog Park survey for review of the Parks and Recreation Advisory Committee at their next meeting on May 25, 2021.

A final version of the survey, with today's agreed upon changes, will be sent out to the Dog Park Working Group along with the minutes from today's meeting.

The meeting adjourned at 2:43 pm

Name: _____

Brief Introduction to the survey to be included. Only one survey per household.

(Note: IP address (*hidden field*) will be used to weed out multiple submissions from the same household)

Part A: General

A.1 Are you a resident of Mississippi Mills?

- YES
- No

If NO, Thank you for your interest in a Mississippi Mills Dog Park; however, this survey is open to residents only. [Survey will conclude!](#)

A.2 In which Mississippi Mills ward do you live?

- Almonte
- Pakenham
- Ramsay

A.3 Do you currently, or plan to soon, have a dog or dogs?

- YES
- No

If YES to Question A.3 - Go to [Part B: Dog Owner](#)

If No to Question A.3 - Skip to [Part D: Would Mississippi Mills Benefit from a Dog Park](#)

Part B: Dog Owner

B.1 How many dogs do you currently have or plan to have?

- 1
- 2
- 3
- More than 3

B.2 Where do you currently take your dog(s) to socialize and exercise?

- Walk on roads and trails
- Off-leash at area parks when it is unoccupied
- Dog park in another Municipality
- Dog day care/private dog park
- Classes (agility, obedience etc.)
- I do not go off my property with my dog(s)
- Other _____

B.3 Putting location aside, if Mississippi Mills had a safe and well-designed dog park, would you use it?

- YES
- NO

If YES to Question B3. Go to [Part C: Dog Park User](#)

If NO to Question B3. Skip to [Part D: Would Mississippi Mills Benefit from a Dog Park](#)

Part C: Dog Park User

C. 1 How often would you use a dog park?

- Daily
- A few times a week
- Weekly
- Monthly
- Rarely
- Never

C.2 What is the maximum time you would be willing to spend driving to a dog park?

- 5 minutes
- 10 minutes
- 15 minutes
- 20 minutes or more
- I would only use the dog park if it was in walking distance

C.3 Please rank the **top 5 amenities**, from the list below, that you would like to see included in a dog park

- Separate areas for large and small dogs
- A special needs area for dogs beginning their socialization or requiring a quieter off-leash area
- Training/Seminar area
- Adequate parking
- Benches
- Signage
- Bulletin board
- Shelter/shade
- Water supply
- Lighting
- Double entry gates
- Secure fencing
- Other

C4. Would you pay an annual membership fee to use a dog park?

- YES
- NO

C5. If YES to C4. above, what is the maximum annual amount you would pay to have use of a dog park?

- 10.00 – 20.00
- 21.00 – 30.00
- 31.00 – 40.00
- 41.00 – 50.00
- 50.00 – 75.00
- Over 75.00

C6. If there was a Dog Park Group would you be willing to volunteer

- YES
- NO

*If YES to Question C6 continue with **question C7 & C8***

*If NO to Question C6 Skip to **Part D: Would Mississippi Mills Benefit from a Dog Park***

Part C: Dog Park User (con't)

C7. How many hours would you be willing to contribute per week?

- Up to 1 hour
- 1-3 hours
- Over 3 hours

C8. What activities you would be interested in doing?

- Clean-up
- Construction and maintenance
- Fund raising
- Education
- Monitoring/Policing

Part D: Would Mississippi Mills Benefit from a Dog Park

D.1 What are the benefits of having a dog park in Mississippi Mills? (check all applicable)

- a safe area for dogs to exercise and play off-leash
 - an area for dogs to improve and maintain social skills in an off-leash environment
 - a place for dog owners to meet and socialize
 - allows those who do not own dogs the opportunity to watch and enjoy dogs interacting and playing
 - reduction in number of off-leash dogs outside of the dog park
 - a safe area to host a variety of dog related activities; sports, education, and training
 - other
-

D.2 What are the concerns with having a dog park in Mississippi Mills? (check all applicable)

- Safety – please describe
-
- noise level
 - assurance of vaccinations
 - overuse/adequate size
 - proximity to homes
 - proximity to other recreational activities
 - environmental concern– please describe
 - terrain/drainage
 - opposed to repurposing of park space
 - adequate parking
 - cleanliness/maintenance (dog feces, garbage, etc)
 - dog aggression
 - Municipal liability
 - cost (both to Municipality and Dog Park Group)
 - other
-

Part D: Would Mississippi Mills Benefit from a Dog Park (con't)

D.3 Given your response to questions 1 and 2 above, do you think Mississippi Mills would benefit from having an area where dogs could safely exercise and play off leash?

- YES
- NO

If NO to Question D.3 [skip to end of survey](#)

Part E: Dog Park Options

E.1 What type of a dog park would you like to see in Mississippi Mills?

- Neighbourhood – approximately 1 acre in size that would service users within a 5-minute drive or a 20-minute walk
- Community – 3 -5 acres in size that would service a catchment area of a 10-minute drive and a higher number of 'local' users, who may or may not arrive on foot (an area the size of Almonte)
- Regional – 10 - 15 acres in size that would service a catchment area within a 20-minute drive (an area the size of all of Mississippi Mills).

Depending on response to E.1 - respondent will be directed to corresponding Question for E.2

E.2.i. If you chose Neighbourhood park, why?

- Cost less than a Community or Regional park
- Separation of large and small dogs possible
- Less maintenance work than a Community or Regional park
- Less use of existing park space than a Community or Regional park
- Always near your dog
- Other _____

E.2.ii. If you chose Community park, why?

- Costs less than a Regional park
- More areas of separation allowed for different dogs and/or activities
- Less maintenance work than a Regional park
- Less use of existing park space than a Regional park
- Ability to move away from a group of dogs while staying in park
- Can accommodate more users than a Neighbourhood park
- Other _____

E2.iii. If you chose Regional park, why?

- Ability for many groups of people and dogs to be in the park at the same time
- More areas of separation allowed for different dogs and/or activities
- Ability to move away from a group of dogs while staying in the park
- Can accommodate more users than a Neighbourhood or Community park
- Other _____

Part E: Dog Park Options (con't.)

E.3 Recognizing that there are costs associated with building and maintaining a dog park, and understanding that there is typically a volunteer Dog Park Group involved with a dog park, what funding would you support for each type of dog park listed below:

Neighbourhood

- Funded entirely by the Municipality
- 50/50 cost splitting between the Municipality and the Dog Park Group
- Municipality provides upfront costs (interest free loan) and Dog Park Group raises money to pay back funds or portion thereof
- Municipality provides a set amount (seed money) and the Dog Park Group is responsible for the remainder
- Funded entirely by the Dog Park Group

Community

- Funded entirely by the Municipality
- 50/50 cost splitting between the Municipality and the Dog Park Group
- Municipality provides upfront costs (interest free loan) and Dog Park Group raises money to pay back funds or portion thereof
- Municipality provides a set amount (seed money) and the Dog Park Group is responsible for the remainder
- Funded entirely by the Dog Park Group

Regional

- Funded entirely by the Municipality
- 50/50 cost splitting between the Municipality and the Dog Park Group
- Municipality provides upfront costs (interest free loan) and Dog Park Group raises money to pay back funds or portion thereof
- Municipality provides a set amount (seed money) and the Dog Park Group is responsible for the remainder
- Funded entirely by the Dog Park Group

E.4 Maintenance of the dog park should be the responsibility of:

- The Municipality
- Shared between the Municipality and the Dog Park Group
- The Dog Park Group

End of Survey - Please provide any comments that we have not addressed in the survey

THANK YOU

May 4, 2021